



SCHWINN
RIDE AS ONE



SCHWINN Z BIKES

Powered by personalized zones, accountability and an instructor who will push riders to be their best, the Z Bikes were designed for studios that focus on unifying their members with color. The configurable console allows for your instructor to design the class around FTP, Heart Rate, or Cadence for an experience that is never the same twice.



SUSTAINABILITY

SAY NO TO STYROFOAM

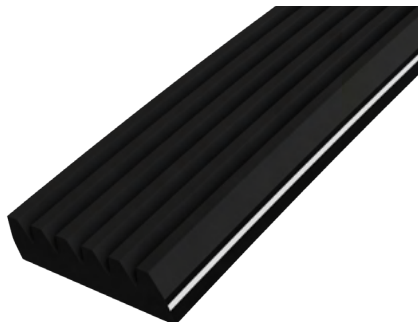
Creating positive impact through thoughtful action. In order to reduce our packaging's negative influence on marine life and waterways, we have replaced expanded polystyrene (EPS) with 100% recycled corrugate, which can be recycled again to also use less raw material. Look for ways to reduce your disposal fees and environmental impact with recycling!



CUSTOMIZATION

We know what it takes to build an authentic, meaningful brand experience. Our customization program is the perfect way to leverage all that hard work into creating an amazing group cycle experience. Whether your goal is creating a tranquil place to unwind or a high-energy disco ball clad club scene, our consultative approach will get you there.

corehealthandfitness.com

BELT FEEL

Zs 9-7510-QINTPO

Smooth Poly V


Za 9-7520-QINTPO

Authentic, toothed carbon belt


Z CONSOLE

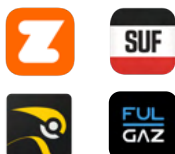
DISPLAY TYPE	Color LCD
NFC TAP TO PAIR	Apple GymKit / Samsung Galaxy Watch connectivity
BLUETOOTH DATA TRACKING	Yes
USB CONNECTIVITY	CSV file ride data out / software updates in
800/900 MHZ RECEIVER	Yes
BLUETOOTH BROADCASTING AND RECEIVING	Yes
ANT+ PROFILE	FE-C, FIT, PWR, HR
POWER SUPPLY	On-board generator
DEVICE CHARGING CAPABILITY	Yes
POWER MEASUREMENT	4iiii® powermeter
POWER ACCURACY	>99%
GEARS / RESISTANCE LEVELS	25

OPENHUB™ CONSOLE CONNECTIVITY
WIRELESS COMMUNICATION:

- Bluetooth
- ANT+
- NFC


PERSONAL CYCLING APPS

Zwift, The Sufferfest, TrainerRoad, Rouvy, FulGaz


GROUP DISPLAY

Intelligent-Cycling, Spivi, PerformanceIQ by ClubReady, Fitmetrix by Mindbody


FITNESS TRACKING

GymTrakr, Apple GymKit, Samsung Galaxy Watch, Myzone, Polar



FEATURES

PRODUCT WEIGHT	130 lbs (59 kg)
SHIPPING WEIGHT	152 lbs (69 kg)
PRODUCT FOOTPRINT (LXW)	42.5 in x 20.6 in (1076.5 mm x 525 mm)
MAX PRODUCT LENGTH	56 in (1420 mm)
SHIPPING DIMENSIONS (LXWXH)	44.5 in x 10.6 in x 38 in (1130 mm x 270 mm x 960 mm)
FRAME MATERIAL	Aluminum
FRAME FINISH	Powder-coated
FRAME COLOR	Quantum Silver
DRIVE SYSTEM/DRIVE TRAIN	Smooth Poly V Zs 9-7510-QINTPO Authentic, toothed carbon belt Za 9-7520-QINTPO
RESISTANCE SYSTEM	6 Magnet Non-Contact Magnetic Resistance
Q-FACTOR	168 mm
HANDLE BAR	Universal
SADDLE	AC Saddle
FORE/AFT ADJUSTMENT SYSTEM	Lever micro-adjustment
HEIGHT ADJUSTMENT SYSTEM	Pop-Pin
FLYWHEEL	Aluminum, thin profile
PEDALS	Morse Taper Double Link - SPD and athletic shoe cage
USER HEIGHT RANGE	4'11 to 6'8 (150 cm to 203 cm)
MAX USER WEIGHT	300 lb (136 kg)

COMPATIBLE CONSOLES

ZONE CONSOLE	Included
---------------------	----------

COMPATIBLE ACCESSORIES AND UPGRADES

PEDALS	Triple Link KEO-compatible, Morse Taper 718-5869 Triple Link Delta-compatible, Morse Taper 740-8689
BIKE NUMBERING TAGS	740-9639
DUMBBELL HOLDERS	700-0504-XX
PHONE HOLDER	740-9596-KT
POWERMETER CRANK	Included



Dumbbells not included

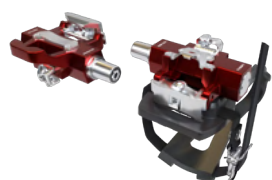


CUSTOMIZATION OPTIONS

FRAME COLORS	Black Grey 83, Zinc Yellow 32, Wrinkle Black 26, Ultramarine Blue 73, Traffic Grey 57, Speckled Red 82, Silver 13, Quantum Silver 79, Purple 49, Powerhouse Granite 62, Peel White 61, Pearl Night Blue 80, Pastel Orange 77, Moss Green 56, Black 60, Karminrot 30, Eagle White 25, Candy Red 27, Candy Blue 65
BRANDING (DECALS)	Head tube, down tube, forks, seat tube, base tube, chain guard
PEDALS	Morse Taper Double Link, Morse Taper Schwinn Triple Link Delta-compatible, Morse Taper Schwinn Triple Link Keo-compatible
SADDLES	AC, SC, Road, Comfort
LED LIGHTS	Included in Z Console: Blue, Cyan, Green, Orange, Purple, Red, Yellow



Comfort Saddle



Morse Taper Triple Link™
Keo-compatible pedals



Standard Morse Taper
Double Link™ pedals



Morse Taper Triple Link™
Delta-compatible pedals



Road Saddle

Core Health & Fitness is more than gym equipment, we offer innovative solutions for all your facility needs. This is why we've brought together five of the most recognizable fitness brands to ensure our customers can offer their members authentic fitness experiences. Whether working with us directly or through our partners and distributors worldwide, we provide the highest quality equipment backed by a service and support team that will always go the extra mile to get you what you need, when you need it. Partner with us and see how our Core Values motivate our every decision.

CORE

HEALTH & FITNESS