



SCHWINN



SC7 7400

Designed for an excellent indoor ride, our whisper quiet Smooth Cycling series allows riders to channel their attention to the experience within the studio. These bikes combine user-focused features, best-in-class biomechanics and plenty of adjustment options to deliver the optimal bike fit for riders of all shapes, sizes and abilities. The SC7 also features customization options like frame color, saddle and pedal styles, plus space to add your company logo to the bike, creating a truly unique studio experience.



POLYV BELT DRIVE SYSTEM

The POLYV BELT creates a whisper quiet and smooth ride and has the strength to withstand the inertia of the perimeter weighted flywheel.



INNOVATIVE AND POWERFUL

Schwinn's Echelon2 console, when paired to a 4iiii powermeter crank, utilizes direct power and can be connected to a group display or leaderboard system via ANT+.

FEATURES

PRODUCT WEIGHT	120 lb (54 kg)
SHIPPING WEIGHT	135 lb
PRODUCT FOOTPRINT (LXWXH)	44.5 in x 21 in x 46 in (113 cm x 53 cm x 117 cm)
MAX PRODUCT LENGTH	55 in (140 cm)
SHIPPING DIMENSIONS (LXWXH)	44.52 in x 11.43 in x 39.01 in
FRAME MATERIAL	Aluminum
FRAME FINISH	Powder Coated
FRAME COLOR	Traffic Grey
DRIVE SYSTEM	Poly-V Belt Drive
RESISTANCE SYSTEM	Direct Pressure
Q-FACTOR	162 mm
HANDLE BAR	Studio
SADDLE	SC Saddle
FORE/AFT ADJUSTMENT SYSTEM	Micro-adjustment
HEIGHT ADJUSTMENT SYSTEM	Pop-Pin
FLYWHEEL	Heavy Perimeter-Weighted
PEDALS	Morse Taper Double Link - SPD and athletic shoe cage
USER HEIGHT RANGE	4 ft 11 in to 6 ft 8 in (150 cm to 203 cm)
MAX USER WEIGHT	350 lb (159 kg)

COMPATIBLE CONSOLES

ECHELON2G	NA
ECHELON2	NA
ECHELON2 FOR 4III®	718-5767
ECHELON2 WITH POWER UPGRADE	NA
CADENCE PRO	700-0008

COMPATIBLE ACCESSORIES

PEDALS	718-5869, 740-8689
BIKE NUMBERING TAGS	718-5943-35
DUMB BELL HOLDERS	700-0481-26
POWERMETER CRANKS	718-5713
MOTOSUMO PHONE HOLDER	700-0475



CUSTOMIZATION OPTIONS

FRAME COLORS	Black Grey 83, Zinc Yellow 32, Wrinkle Black 26, Ultramarine Blue 73, Traffic Grey 57, Speckled Red 82, Silver 13, Quantum Silver 79, Purple 49, Powerhouse Granite 62, Peel White 61, Pearl Night Blue 80, Pastel Orange 77, Moss Green 56, Black 60, Karminrot 30, Eagle White 25, Candy Red 27, Candy Blue 65
BRANDING (DECALS)	head tube, down tube, forks, flywheel, seat tube, chain guard
PEDALS	Morse Taper Double Link, Morse Taper Schwinn Triple Link Delta-compatible, Morse Taper Schwinn Triple Link Keo-compatible
SADDLES	AC, SC, Road, Comfort
CONSOLES	Echelon 2 Console, Cadence Pro
POWERMETER CRANKS	4iiii® direct crank-based power measurement
LED LIGHTS	NA
ACCESSORIES	Numbering tags, Dumb bell holders



SC Saddle



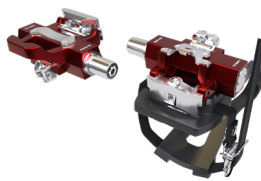
Comfort Saddle



Road Saddle



AC Saddle



Morse Taper Triple Link™
Keo-compatible pedals



Standard Morse Taper
Double Link™ pedals



Morse Taper Triple Link™
Delta-compatible pedals

Core Health & Fitness is more than gym equipment, we offer innovative solutions for all your facility needs. This is why we've brought together five of the most recognizable fitness brands to ensure our customers can offer their members authentic fitness experiences. Whether working with us directly or through our partners and distributors worldwide, we provide the highest quality equipment backed by a service and support team that will always go the extra mile to get you what you need, when you need it. Partner with us and see how our Core Values motivate our every decision.

