

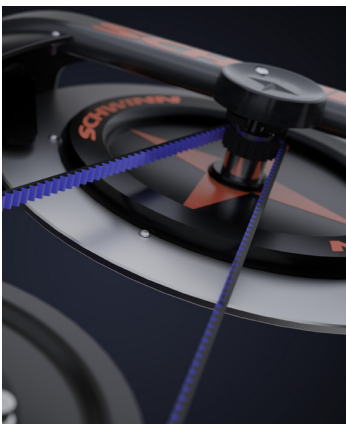


SCHWINN



AC™ PERFORMANCE 7320

With the appeal of intelligent design and the durability of an aluminum frame, the AC Performance was designed to elevate studio cycling experiences worldwide. Our Carbon Blue belt and ergonomically designed performance handlebars mimic the authentic feel of an outdoor bike, creating a broad-based appeal that attracts experienced and novice riders alike. When you want a fully adjustable experience, chose the AC Performance, featuring the versatile Schwinn Fit System which enables seat and handlebar adjustments for refined positioning.



CARBON BLUE DRIVE SYSTEM

The CARBON BLUE BELT replicates the feel of a traditional chain drive giving the rider an authentic outdoor experience. The belt never requires lubrication, tension never needs to be adjusted and the carbon fiber reinforcement is incredibly durable. Our 10 Year Warranty is the longest of any belt or chain on the market.



INNOVATIVE AND POWERFUL

Schwinn's Echelon2 consoles utilize direct or estimated power and can be connected to a group display or leaderboard system via ANT+.

FEATURES

PRODUCT WEIGHT	102 lb (46 kg)
SHIPPING WEIGHT	113 lb
PRODUCT FOOTPRINT (LXWXH)	42 in x 21 in x 51 in (107 cm x 53 cm x 130 cm)
MAX PRODUCT LENGTH	54 in (137 cm)
SHIPPING DIMENSIONS (LXWXH)	44 in x 11 in x 38 in
FRAME MATERIAL	Aluminum
FRAME FINISH	Powder Coated
FRAME COLOR	Eagle White
DRIVE SYSTEM	Carbon Blue™ Belt Drive
RESISTANCE SYSTEM	6- Magnet Non- Contact Magnetic Resistance
Q-FACTOR	168 mm
HANDLE BAR	Performance Plus™
SADDLE	AC Saddle
FORE/AFT ADJUSTMENT SYSTEM	Micro-adjustment
HEIGHT ADJUSTMENT SYSTEM	Pop-Pin
FLYWHEEL	aluminum, thin profile
PEDALS	Morse Taper Double Link - SPD and athletic shoe cage
USER HEIGHT RANGE	4'11" to 6'8" (150 cm to 203 cm)
MAX USER WEIGHT	350 lb (159 kg)

COMPATIBLE CONSOLES

ECHELON2G	NA
ECHELON2	740-8727
ECHELON2 FOR 4IIII®	718-5767
ECHELON2 WITH POWER UPGRADE	740-8941
CADENCE PRO	740-8803

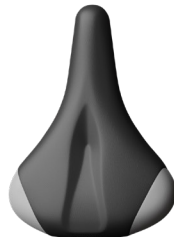
COMPATIBLE ACCESSORIES

PEDALS	718-5869, 740-8689
BIKE NUMBERING TAGS	718-5943-35
DUMB BELL HOLDERS	718-5957
POWERMETER CRANKS	718-5765
MOTOSUMO PHONE HOLDER	700-0475



CUSTOMIZATION OPTIONS

FRAME COLORS	Black Grey 83, Zinc Yellow 32, Wrinkle Black 26, Ultramarine Blue 73, Traffic Grey 57, Speckled Red 82, Silver 13, Quantum Silver 79, Purple 49, Powerhouse Granite 62, Peel White 61, Pearl Night Blue 80, Pastel Orange 77, Moss Green 56, Black 60, Karminrot 30, Eagle White 25, Candy Red 27, Candy Blue 65
BRANDING (DECALS)	head tube, down tube, forks, inner flywheel, flywheel rim, seat tube
PEDALS	Morse Taper Double Link, Morse Taper Schwinn Triple Link Delta-compatible, Morse Taper Schwinn Triple Link Keo-compatible
SADDLES	AC, SC, Road, Comfort
CONSOLES	Echelon 2 Console, Cadence Pro
POWERMETER CRANKS	4iiii(R) direct crank-based power measurement
LED LIGHTS	NA
ACCESSORIES	Numbering tags, Dumb bell holders



SC Saddle



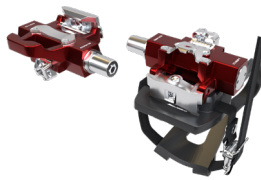
Comfort Saddle



Road Saddle



AC Saddle



Morse Taper Triple Link™
Keo-compatible pedals



Standard Morse Taper
Double Link™ pedals



Morse Taper Triple Link™
Delta-compatible pedals

Core Health & Fitness is more than gym equipment, we offer innovative solutions for all your facility needs. This is why we've brought together five of the most recognizable fitness brands to ensure our customers can offer their members authentic fitness experiences. Whether working with us directly or through our partners and distributors worldwide, we provide the highest quality equipment backed by a service and support team that will always go the extra mile to get you what you need, when you need it. Partner with us and see how our Core Values motivate our every decision.

