



From Olympic benches that can be customized with or without weight storage to our one-of-a-kind abdominal and back extension benches, we've raised the bar for both aesthetics and function. Our benches and racks flow seamlessly with our other products so you will notice a family look and feel as you position your free weights along side our other strength lines. Our benches and racks don't just look strong, they exceed industry requirements in all respects.

We know what it takes to build an authentic, meaningful brand experience. Our customization program is the perfect way to leverage your personal brand and make a strong first impression. Get Nautilus Benches & Racks in a variety of custom frame color and upholstery options.

Throwdown Free Weights pair perfectly with Nautilus Strength products allowing you to get everything in one place. You can even find free weight sets crafted specifically for popular Nautilus Benches & Racks, Leverage and Plate Loaded products.



#### WOODEN PLATFORM HDP62

<b>WEIGHT</b>	95 in (241 cm)
<b>LENGTH</b>	141 in (358 cm)
<b>HEIGHT</b>	4 in (10 cm)
<b>OVERALL WEIGHT</b>	751 lbs (341 kg)
<b>SHIPPING WEIGHT</b>	751 lbs (341 kg)
<b>STANDARD FRAME COLOR OPTIONS</b>	Oak platform, black trim
<b>FRAME FINISH</b>	-60Black
<b>CUSTOMIZABLE PAINT OPTIONS AVAILABLE</b>	No
<b>CUSTOMIZABLE BRANDING OPTIONS AVAILABLE</b>	Yes with additional fees and extended lead times
<b>BOLT DOWN LOCATIONS DEFINED</b>	Yes
<b>INTEGRATED LEVELING SYSTEM</b>	Yes, floating platform that is tied into frame
<b>HARDWARE TYPE</b>	Hex
<b>TUBBING STYLE &amp; THICKNESS</b>	Modern, round tubing. Most are 3 or 2.5mm / 11 ga
<b>FOOT PLATFORM</b>	Lifting Area: 71.9" x 91.5" x 3.1" (182.6 cm x 232.4 cm x 7.9 cm)



#### STAND ALONE SVA PLATFORM HDP6D-SA

<b>WEIGHT</b>	95 in (241 cm)
<b>LENGTH</b>	77 in (196 cm)
<b>HEIGHT</b>	4 in (10 cm)
<b>STACK WEIGHT</b>	N/A
<b>OVERALL WEIGHT</b>	642 lbs (292 kg)
<b>SHIPPING WEIGHT</b>	642 lbs (292 kg)
<b>STANDARD FRAME COLOR OPTIONS</b>	Oak platform, black trim
<b>FRAME FINISH</b>	-60Black
<b>CUSTOMIZABLE BRANDING OPTIONS AVAILABLE</b>	Yes with additional fees and extended lead times
<b>BOLT DOWN LOCATIONS DEFINED</b>	Yes
<b>INTEGRATED LEVELING SYSTEM</b>	Yes, floating platform that is tied into frame
<b>HARDWARE TYPE</b>	Hex
<b>TUBBING STYLE &amp; THICKNESS</b>	Modern, round tubing. Most are 3 or 2.5mm / 11 ga
<b>FOOT PLATFORM</b>	Lifting Area: 76.1" x 95" x 4" (193.3 cm x 241.3 cm x 10.2 cm)



#### SVA PLATFORM HDP6D

<b>WEIGHT</b>	95 in (241 cm)
<b>LENGTH</b>	140 in (356 cm)
<b>HEIGHT</b>	4 in (10 cm)
<b>STACK WEIGHT</b>	N/A
<b>OVERALL WEIGHT</b>	825 lbs (375 kg)
<b>SHIPPING WEIGHT (BOXED)</b>	825 lbs (375 kg)
<b>STANDARD FRAME COLOR OPTIONS</b>	Oak platform, black trim
<b>STANDARD UPHOLSTERY COLOR OPTIONS</b>	N/A
<b>FRAME FINISH</b>	-60Black
<b>CUSTOMIZABLE PAINT OPTIONS AVAILABLE</b>	No
<b>CUSTOMIZABLE BRANDING OPTIONS AVAILABLE</b>	Yes with additional fees and extended lead times
<b>BOLT DOWN LOCATIONS DEFINED</b>	Yes
<b>INTEGRATED LEVELING SYSTEM</b>	Yes, floating platform that is tied into frame
<b>HARDWARE TYPE</b>	Hex
<b>TUBBING STYLE &amp; THICKNESS</b>	Modern, round tubing. Most are 3 or 2.5mm / 11 ga
<b>FOOT PLATFORM</b>	Lifting Area: 76.1" x 95" x 4" (193.3 cm x 241.3 cm x 10.2 cm)



#### HALF RACK HDHR2

<b>WEIGHT</b>	72 in (183 cm)
<b>LENGTH</b>	63 in (160 cm)
<b>HEIGHT</b>	97 in (246 cm)
<b>STACK WEIGHT</b>	N/A
<b>OVERALL WEIGHT</b>	512 lbs (232 kg)
<b>SHIPPING WEIGHT</b>	560 lbs (254 kg)
<b>ASSISTED ADJUSTMENTS</b>	No
<b>COLOR CODED PIVOT POINTS AND ADJUSTMENTS</b>	Safety and bar hooks are clearly marked
<b>STANDARD FRAME COLOR OPTIONS</b>	Silver with black trim
<b>STANDARD UPHOLSTERY COLOR OPTIONS</b>	N/A
<b>FRAME FINISH</b>	Electrostatic Powder coating
<b>CUSTOMIZABLE PAINT OPTIONS AVAILABLE</b>	Yes with additional fees and extended lead times
<b>BOLT DOWN LOCATIONS DEFINED</b>	Yes
<b>INTEGRATED LEVELING SYSTEM</b>	No
<b>HARDWARE TYPE</b>	Hex / Button Head
<b>TUBBING STYLE &amp; THICKNESS</b>	Modern blend of square and round tubing. Most are 3 or 2.5mm /11 ga
<b>USER SPECIFIC INFORMATION</b>	
<b>SAFETY CATCH &amp; STOPS</b>	Yes, deep J-Hook style bar catch keeps bars from bouncing out while protective inserts prevent damage. Heavy duty safety bar catch with wear shield to protect the Olympic bar and frame.
<b>WATER BOTTLE HOLDER</b>	No
<b>PHONE HOLDER</b>	No
<b>PLATE LOADED</b>	Yes, maximum load not to exceed 955 lbs (434 kg)
<b>WEIGHT STORAGE SOLUTION</b>	Yes, angled, chrome weight horns (x8) and Olympic bar holder. Plus, optional bumper plate storage, wood platform and band pegs.



**SQUAT RACK NP-R8008**

<b>WEIGHT</b>	80 in (203 cm)
<b>LENGTH</b>	71 in (180 cm)
<b>HEIGHT</b>	79 in (201 cm)
<b>STACK WEIGHT</b>	N/A
<b>OVERALL WEIGHT</b>	445 lbs (202 kg)
<b>SHIPPING WEIGHT (BOXED)</b>	476 lbs (216 kg)
<b>ASSISTED ADJUSTMENTS</b>	Gravity assisted with multiple bar placement options for users of all sizes and exercise variation
<b>STANDARD FRAME COLOR OPTIONS</b>	Silver, White, Black
<b>STANDARD UPHOLSTERY COLOR OPTIONS</b>	N/A
<b>FRAME FINISH</b>	Electrostatic Powder coating
<b>CUSTOMIZABLE PAINT OPTIONS AVAILABLE</b>	Yes with additional fees and extended lead times
<b>BOLT DOWN LOCATIONS DEFINED</b>	Yes
<b>INTEGRATED LEVELING SYSTEM</b>	No, rubber feet for floor protection
<b>HARDWARE TYPE</b>	Hex / Button Head
<b>TUBBING STYLE &amp; THICKNESS</b>	Modern blend of square and round tubing. Most are 3 or 2.5mm / 11 ga
<b>SAFETY CATCH &amp; STOPS</b>	Adjustable safety catch system for exercise variation and user safety
<b>WATER BOTTLE HOLDER</b>	No
<b>PHONE HOLDER</b>	No
<b>PLATE LOADED</b>	Standard Olympic plate storage, features six pegs per side to accommodate all weight plate configurations
<b>WEIGHT STORAGE SOLUTION</b>	Molded urethane bar holders for quiet, safe Olympic bar placement



**POWER CAGE NP-R8005**

<b>WEIGHT</b>	63 in (160 cm)
<b>LENGTH</b>	74 in (188 cm)
<b>HEIGHT</b>	89 in (226 cm)
<b>STACK WEIGHT</b>	N/A
<b>OVERALL WEIGHT</b>	525 lbs (238 kg)
<b>SHIPPING WEIGHT</b>	692 lbs (314 kg)
<b>ASSISTED ADJUSTMENTS</b>	None for Adjustable safety bar supports but pull pin adjustable bar catches
<b>STANDARD FRAME COLOR OPTIONS</b>	Silver, White, Black
<b>STANDARD UPHOLSTERY COLOR OPTIONS</b>	N/A
<b>FRAME FINISH</b>	Electrostatic Powder coating
<b>CUSTOMIZABLE PAINT OPTIONS AVAILABLE</b>	Yes with additional fees and extended lead times
<b>BOLT DOWN LOCATIONS DEFINED</b>	Yes
<b>INTEGRATED LEVELING SYSTEM</b>	No, rubber feet for floor protection
<b>HARDWARE TYPE</b>	Hex / Button Head
<b>TUBBING STYLE &amp; THICKNESS</b>	Modern blend of square and round tubing. Most are 3 or 2.5mm / 11 ga
<b>STATIC PLACARDS</b>	No
<b>SAFETY CATCH &amp; STOPS</b>	Yes, adjustable safety bar supports and walk through front design
<b>GRIP SPECIFICATIONS</b>	Multiple grip configurations integrated with pull up station
<b>PLATE LOADED</b>	900 lbs max load capacity
<b>WEIGHT STORAGE SOLUTION</b>	Complete Olympic plate storage with angled, chrome weight horns (x8) with numeric markers for correct placement of stored plates



**2-SIDED OLYMPIC WEIGHT TREE NP-R7512**

<b>WEIGHT</b>	27 in (69 cm)
<b>LENGTH</b>	35 in (89 cm)
<b>HEIGHT</b>	40 in (102 cm)
<b>STACK WEIGHT</b>	N/A
<b>OVERALL WEIGHT</b>	86 lbs (39 kg)
<b>SHIPPING WEIGHT (BOXED)</b>	99 lbs (45 kg)
<b>STANDARD FRAME COLOR OPTIONS</b>	Silver, White, Black
<b>FRAME FINISH</b>	Electrostatic Powder coating
<b>CUSTOMIZABLE PAINT OPTIONS AVAILABLE</b>	No
<b>BOLT DOWN LOCATIONS DEFINED</b>	Yes
<b>INTEGRATED LEVELING SYSTEM</b>	No, rubber feet for floor protection
<b>HARDWARE TYPE</b>	Hex / Button Head
<b>TUBBING STYLE &amp; THICKNESS</b>	Modern blend of square and round tubing. Most are 3 or 2.5mm / 11 ga
<b>SAFETY CATCH &amp; STOPS</b>	No, but wear guards on cross bar legs to protect finish
<b>WATER BOTTLE HOLDER</b>	No
<b>PHONE HOLDER</b>	No
<b>PLATE LOADED</b>	Yes
<b>WEIGHT STORAGE SOLUTION</b>	Complete Olympic plate storage with angled, chrome weight horns (x8) with numeric markers for correct placement of stored plates



**4-SIDED OLYMPIC WEIGHT TREE NP-R7513**

<b>WEIGHT</b>	28 in (71 cm)
<b>LENGTH</b>	28 in (71 cm)
<b>HEIGHT</b>	46 in (117 cm)
<b>STACK WEIGHT</b>	N/A
<b>OVERALL WEIGHT</b>	135 lbs (61 kg)
<b>SHIPPING WEIGHT (BOXED)</b>	161 lbs (73 kg)
<b>STANDARD FRAME COLOR OPTIONS</b>	Silver, White, Black
<b>STANDARD UPHOLSTERY COLOR OPTIONS</b>	N/A
<b>FRAME FINISH</b>	Electrostatic Powder coating
<b>CUSTOMIZABLE PAINT OPTIONS AVAILABLE</b>	No
<b>BOLT DOWN LOCATIONS DEFINED</b>	Yes
<b>INTEGRATED LEVELING SYSTEM</b>	No, rubber feet for floor protection
<b>HARDWARE TYPE</b>	Hex / Button Head
<b>TUBBING STYLE &amp; THICKNESS</b>	Modern blend of square and round tubing. Most are 3 or 2.5mm / 11 ga
<b>PLATE LOADED</b>	Yes
<b>WEIGHT STORAGE SOLUTION</b>	Complete Olympic plate storage with angled, chrome weight horns (x12) with numeric markers for correct placement of stored plates. Two storage sleeves to accommodate 5 foot Olympic bars



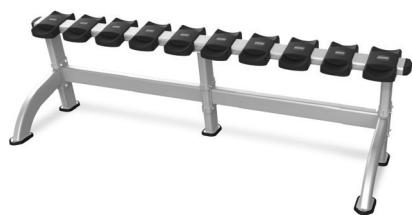
**BARBELL RACK NP-R8012**

<b>WEIGHT</b>	36 in (91 cm)
<b>LENGTH</b>	38 in (97 cm)
<b>HEIGHT</b>	53 in (135 cm)
<b>STACK WEIGHT</b>	N/A
<b>OVERALL WEIGHT</b>	159 lbs (72 kg)
<b>SHIPPING WEIGHT</b>	179 lbs (81 kg)
<b>STANDARD FRAME COLOR OPTIONS</b>	Silver, White, Black
<b>FRAME FINISH</b>	Electrostatic Powder coating with urethane protected surfaces
<b>CUSTOMIZABLE PAINT OPTIONS AVAILABLE</b>	Yes with additional fees and extended lead times
<b>BOLT DOWN LOCATIONS DEFINED</b>	Yes
<b>INTEGRATED LEVELING SYSTEM</b>	No, rubber feet for floor protection
<b>HARDWARE TYPE</b>	Hex / Button Head
<b>TUBBING STYLE &amp; THICKNESS</b>	Modern blend of square and round tubing. Most are 3 or 2.5mm / 11 ga
<b>PLATE LOADED</b>	No
<b>WEIGHT STORAGE SOLUTION</b>	Angled, steel horns to accommodate standard and EZ Curl barbell systems



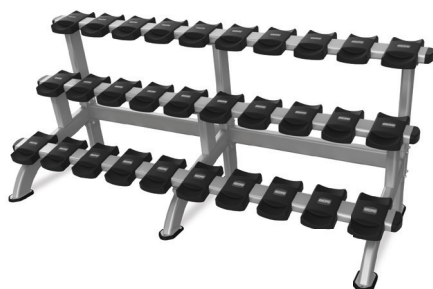
**ACCESSORY RACK NP-R8013**

<b>WEIGHT</b>	28 in (71 cm)
<b>LENGTH</b>	35 in (89 cm)
<b>HEIGHT</b>	51 in (130 cm)
<b>STACK WEIGHT</b>	N/A
<b>OVERALL WEIGHT</b>	141 lbs (64 kg)
<b>SHIPPING WEIGHT</b>	161 lbs (73 kg)
<b>STANDARD FRAME COLOR OPTIONS</b>	Silver, White, Black
<b>FRAME FINISH</b>	Electrostatic Powder coating with urethane protected surfaces
<b>CUSTOMIZABLE PAINT OPTIONS AVAILABLE</b>	Yes with additional fees and extended lead times
<b>BOLT DOWN LOCATIONS DEFINED</b>	Yes
<b>INTEGRATED LEVELING SYSTEM</b>	No, rubber feet for floor protection
<b>HARDWARE TYPE</b>	Hex / Button Head
<b>TUBBING STYLE &amp; THICKNESS</b>	Modern blend of square and round tubing. Most are 3 or 2.5mm / 11 ga
<b>WATER BOTTLE HOLDER</b>	No
<b>PHONE HOLDER</b>	No
<b>PLATE LOADED</b>	No
<b>WEIGHT STORAGE SOLUTION</b>	Angled, steel horns to accommodate multiple handles and accessory bars. Plus, top tray with rubber base for storage of smaller items



**NAUTILUS RACKS NP-R8009**

<b>WEIGHT</b>	90 in (229 cm)
<b>LENGTH</b>	28 in (71 cm)
<b>HEIGHT</b>	26 in (66 cm)
<b>STACK WEIGHT</b>	N/A
<b>OVERALL WEIGHT</b>	155 lbs (70 kg)
<b>SHIPPING WEIGHT (BOXED)</b>	181 lbs (82 kg)
<b>STANDARD FRAME COLOR OPTIONS</b>	Silver, White, Black
<b>FRAME FINISH</b>	Electrostatic Powder coating
<b>CUSTOMIZABLE PAINT OPTIONS AVAILABLE</b>	Yes with additional fees and extended lead times
<b>BOLT DOWN LOCATIONS DEFINED</b>	Yes
<b>INTEGRATED LEVELING SYSTEM</b>	No, rubber feet for floor protection
<b>HARDWARE TYPE</b>	Hex / Button Head
<b>TUBBING STYLE &amp; THICKNESS</b>	Modern blend of square and round tubing. Most are 3 or 2.5mm / 11 ga
<b>WATER BOTTLE HOLDER</b>	No
<b>PHONE HOLDER</b>	No
<b>PLATE LOADED</b>	No
<b>WEIGHT STORAGE SOLUTION</b>	Molded urethane cradles for quiet and safe dumbbell placement, 5 pair rack



**TRIPLE DUMBBELL RACK NP-R8011**

<b>WEIGHT</b>	90 in (229 cm)
<b>LENGTH</b>	38 in (97 cm)
<b>HEIGHT</b>	39 in (99 cm)
<b>STACK WEIGHT</b>	N/A
<b>OVERALL WEIGHT</b>	364 lbs (165 kg)
<b>SHIPPING WEIGHT (BOXED)</b>	386 lbs (175 kg)
<b>STANDARD FRAME COLOR OPTIONS</b>	Silver, White, Black
<b>FRAME FINISH</b>	Electrostatic Powder coating
<b>CUSTOMIZABLE PAINT OPTIONS AVAILABLE</b>	Yes with additional fees and extended lead times
<b>BOLT DOWN LOCATIONS DEFINED</b>	Yes
<b>INTEGRATED LEVELING SYSTEM</b>	No, rubber feet for floor protection
<b>HARDWARE TYPE</b>	Hex / Button Head
<b>TUBBING STYLE &amp; THICKNESS</b>	Modern blend of square and round tubing. Most are 3 or 2.5mm / 11 ga
<b>WATER BOTTLE HOLDER</b>	No
<b>PHONE HOLDER</b>	No
<b>PLATE LOADED</b>	No
<b>WEIGHT STORAGE SOLUTION</b>	Molded urethane cradles for quiet and safe dumbbell placement, 15 pair rack



**BEAUTY BELL RACK NP-R8014**

<b>WEIGHT</b>	32 in (81 cm)
<b>LENGTH</b>	40 in (102 cm)
<b>HEIGHT</b>	40 in (102 cm)
<b>STACK WEIGHT</b>	N/A
<b>OVERALL WEIGHT</b>	132 lbs (60 kg)
<b>SHIPPING WEIGHT (BOXED)</b>	141 lbs (64 kg)
<b>STANDARD FRAME COLOR OPTIONS</b>	Silver, White, Black
<b>FRAME FINISH</b>	Electrostatic Powder coating
<b>CUSTOMIZABLE PAINT OPTIONS AVAILABLE</b>	Yes with additional fees and extended lead times
<b>BOLT DOWN LOCATIONS DEFINED</b>	Yes
<b>INTEGRATED LEVELING SYSTEM</b>	No, rubber feet for floor protection
<b>HARDWARE TYPE</b>	Hex / Button Head
<b>TUBBING STYLE &amp; THICKNESS</b>	Modern blend of square and round tubing. Most are 3 or 2.5mm / 11 ga
<b>WATER BOTTLE HOLDER</b>	No
<b>PHONE HOLDER</b>	No
<b>PLATE LOADED</b>	No
<b>WEIGHT STORAGE SOLUTION</b>	Molded urethane cradles for quiet and safe dumbbell placement, 12 pair rack

Core Health & Fitness is more than gym equipment, we offer innovative solutions for all your facility needs. This is why we've brought together five of the most recognizable fitness brands to ensure our customers can offer their members authentic fitness experiences. Whether working with us directly or through our partners and distributors worldwide, we provide the highest quality equipment backed by a service and support team that will always go the extra mile to get you what you need, when you need it. Partner with us and see how our Core Values motivate our every decision.

**CORE**  
HEALTH & FITNESS

StairMaster®  
SCHWINN  
NAUTILUS  
STAR TRAC  
THROWDOWN®